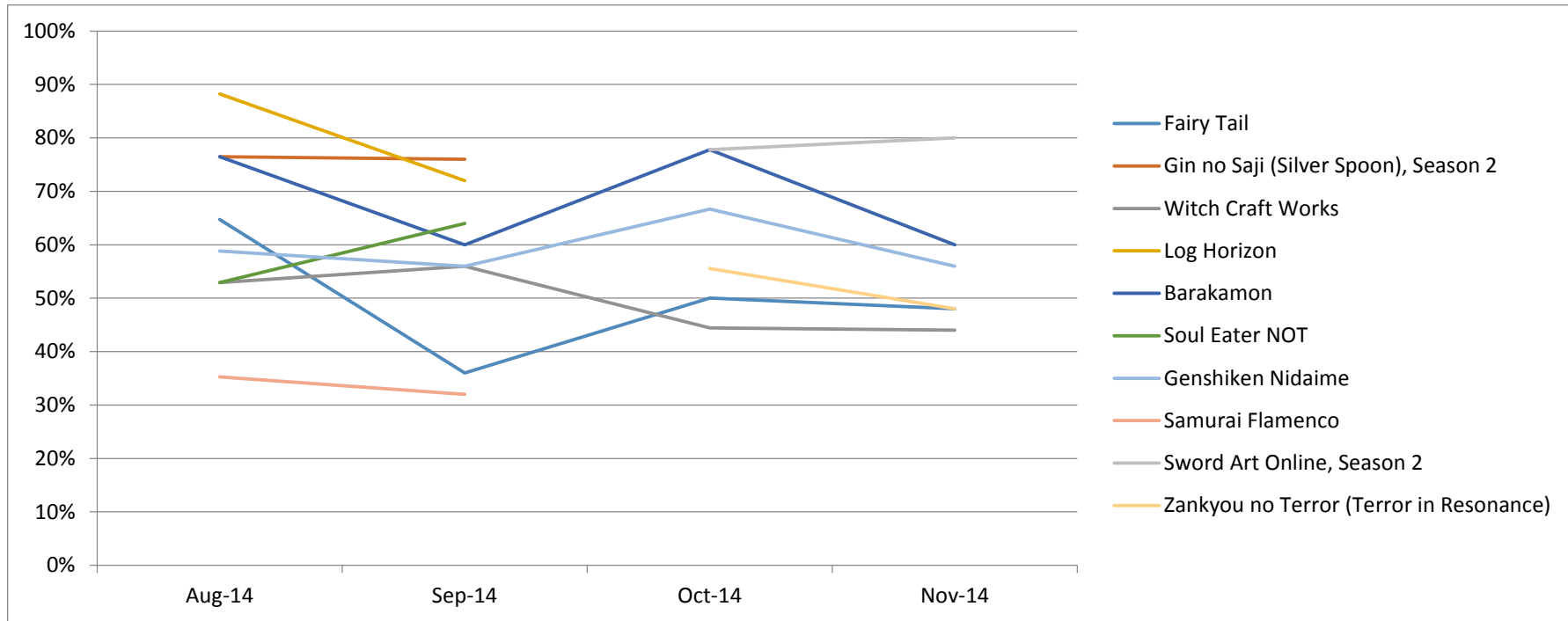


% Of Respondents Who Put Each Show in Their Top 10

2014

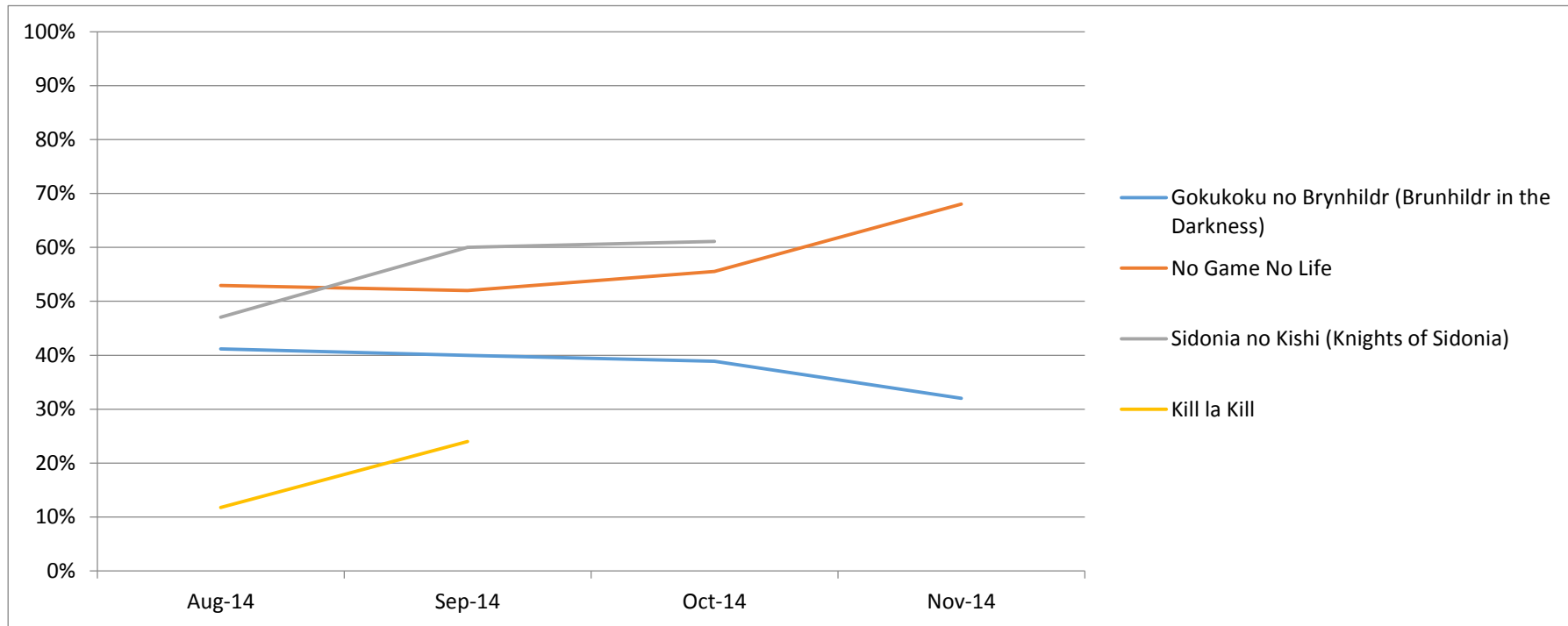
Shows Screened Before the Late Break



% Of Respondents Who Put Each Show in Their Top 10

2014

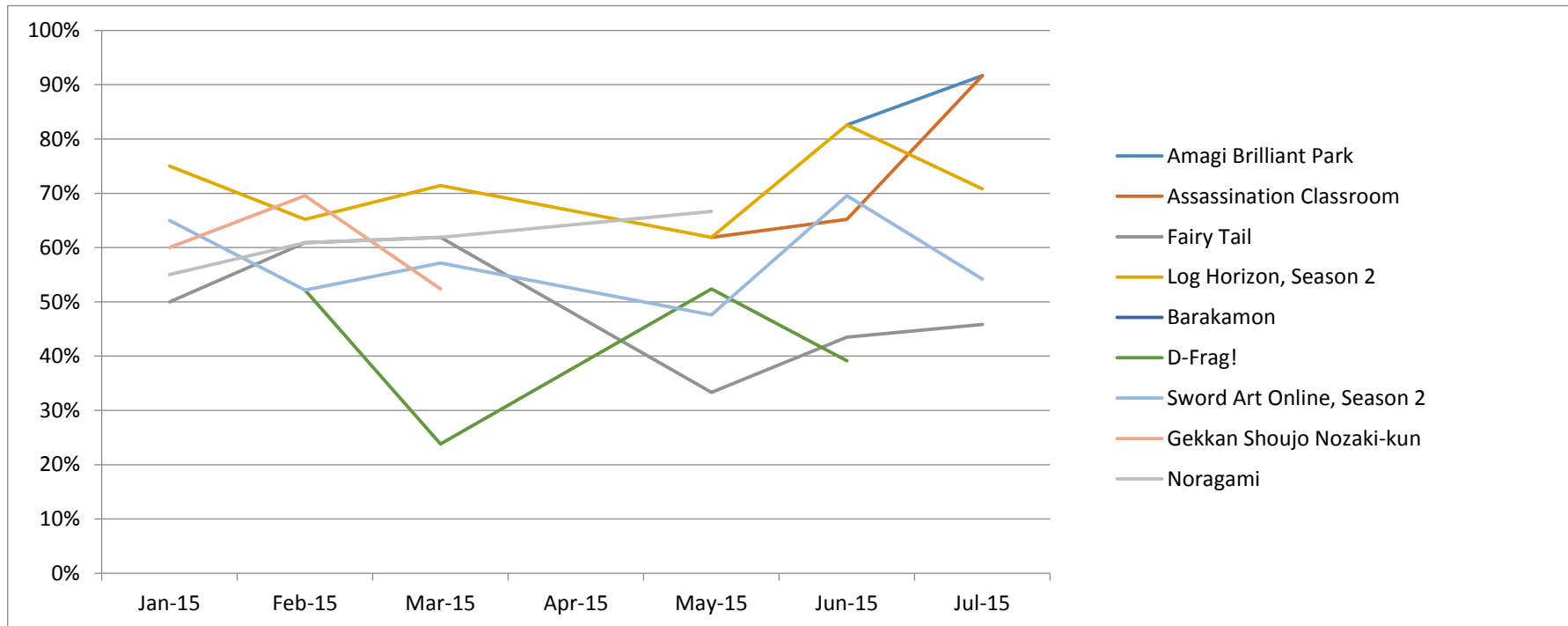
Shows Screened After the Late Break



% Of Respondents Who Put Each Show in Their Top 10

2015

Shows Screened Before the Late Break



% Of Respondents Who Put Each Show in Their Top 10

2015

Shows Screened After the Late Break

